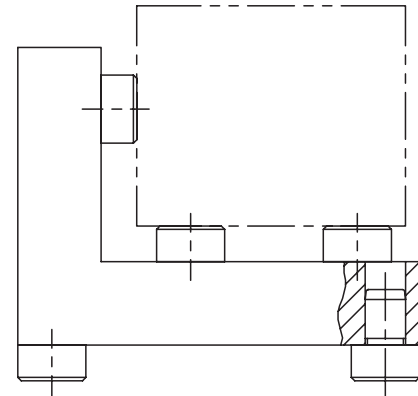


# Carbide Tipped Rest Buttons

## Improved Wear Resistance And Extended Durability!



Available in a wide range of sizes, these precision height locators have a close-tolerance shank for installation in a reamed hole. Offering an extremely long life, these new Carbide Tipped Rest Buttons can replace our steel Rest Buttons, and are available in all of the same sizes.

Rest Buttons are extremely useful as supports, side locator pads, and jig feet. Previously available in steel and stainless steel, and now available in steel with a carbide pad for extreme wear resistance.

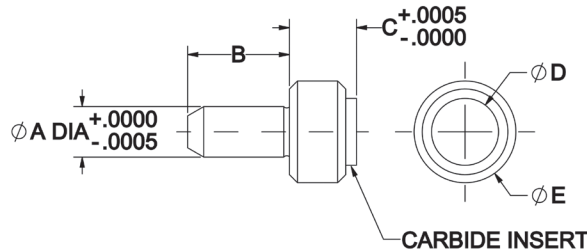
Visit the online catalog at [carrlane.com](http://carrlane.com) for a huge variety of supports, rests and feet, along with thousands of other products, including alignment pins, hoist rings, toggle clamps, handles and knobs, spring-loaded devices, locators, specialty clamps, jig and fixture bases, modular fixturing, drill-jig bushings, power workholding and more.

**CarrLane**<sup>®</sup>  
M A N U F A C T U R I N G C O.

[carrlane.com](http://carrlane.com) 314.647.6200

## Longer Working Life Than Steel Rest Buttons, Resulting in Cost Savings!

Carbide-Tipped Rest Buttons are available in many of the same diameters and heights as our standard Rest Buttons, so they can be used as direct replacements where additional wear resistance is desired. These rest buttons feature a thick embedded carbide pad, finish machined to a precision height. Like a standard Rest Button, these locators have a close-tolerance shank for installation in a reamed hole.



### STEEL (INCH)

PART NO.	A DIA		B	C		D DIA	E DIA
	NOMINAL	ACTUAL		NOMINAL	ACTUAL		
CL-12-CTRB	3/16	.1885	3/8	1/4	.2500	1/4	3/8
CL-14-CTRB				1/2	.5000		
CL-3-CTRB	1/4	.2510	1/2	3/8	.3750	3/8	1/2
CL-5-CTRB	3/8	.3760	5/8	1/4	.2500	1/2	5/8
CL-6-CTRB				3/8	.3750		
CL-7-CTRB				5/8	.6250		
CL-15-CTRB	1/2	.5010	5/8	3/8	.3750	3/4	7/8
CL-9-CTRB				1/2	.5000		
CL-19-CTRB				3/4	.7515		